

Roseville: Intermediate

Thank you for joining! We will get started shortly!

Agenda:

- Creating Lessons
 - Lesson Builder Overview
 - Inserting Activities
 - Inserting Microsoft Forms, Sways, etc.
- Reminder about Marketplace-FREE Resources
- Q/A and Practice

AGENDA



Sheila Wolsker

Education Consultant

sheila.wolsker@prometheanworld.com

@SWolsker on Twitter

@LearnPromethean

Hometown – Shelby Twp., Michigan

College – Northern Michigan University

Teaching – 10 years

2nd & 8th Grade

Language Arts

Social Studies

Family

Husband – Justin

3 children – Dylan -16 years old

Devin- 14 years old

Delaney-12 years old



- Use Chrome or Safari (Chrome is preferred)
- Resize Teams so you can see both my screen and yours at the same time! (split screen)
- Or log in to ClassFlow with a second device.
- Or toggle between two tabs.

The screenshot shows the ClassFlow login page. The URL bar displays 'prod.classflow.com/classflow/#!/login'. The page features the 'CLASSFLOW' logo at the top. Below the logo, there is a 'Back to Home' link and a list of features: 'Search and find lessons and content', 'Deliver interactive and collaborative classes', 'Assess and reward learning in real-time', and 'Extend the classroom with assignments and class posts'. At the bottom, there are two large buttons: 'Log In as a Teacher' (blue) and 'Log In as a Student' (green). A link for 'Need an account? Register here.' is also visible.

The screenshot shows the ClassFlow Lesson Builder interface. A welcome message reads: 'Thank you for joining! We will get started shortly! While you wait....Please sign-in to today's training by going to: bit.ly/Wolsker and select "ClassFlow Orientation"'. Below this, a note states: '*You will have time to practice and play today, so it is important that you have already created a ClassFlow account.' An 'Agenda:' section lists the following items: 'Quick Tour-Instant Whiteboard, Quick Polling, Activities, Assessments', 'Creating Classes & Enrolling Students', 'Uploading Resources & Sharing Resources on classfeed', 'Creating Lessons (Quick Overview)', 'Reminder about Marketplace-FREE Resources', and 'Q/A and Practice'. At the bottom of the interface, there are navigation controls including back, forward, and a 'Show Names' toggle switch.

Create a Lesson: Quick Overview

Saved

Preview

Deliver



Insert Select Shapes Text Pen Eraser Toolbox Camera Assessment Link Clear Fill

Collaborate Show Icon Only Toggle

Search Zoom In Zoom Out Undo Redo

Section 1

Insert allows you to insert files, resources, etc.

1

Great way to have multiple teachers edit a lesson in real time.

Teacher cards vs. Student cards

Card notes

Teacher cards Student cards

Any Questions?™



Task Time: Create a Lesson from Scratch

TASK 1:

- Think of a bell ringer activity, warm-up problem/question, etc. that you could do with your class tomorrow.
- Click "Resources"
- Click "New"
- Click "Lesson" & begin creating lesson

TASK 2:

- Insert an item from the ClassFlow Resource Pack onto a card.
- Insert a Bing image onto a card.
- Insert a YouTube video onto a separate card.
- Insert a Bing Webpage onto a separate card (Newsela, Epic Books, etc.)
- Insert a PDF from your computer or connect to your OneDrive and copy a resource. (If PDF is multiple pages, it will put it on one card with a document viewer.)
- Insert a link or embedd a link to a Microsoft Sway, Form, etc.
- Insert an activity that you have already made.
- Practice locking text, anchoring items, adding actions, etc.
- Preview the card.

Day 2-ClassFlow-Winton Woods

Insert Select Shapes Text Pen Eraser Toolbox Camera Assessment Link Clear Fill

My Resources Search My Resources

My Resources ClassFlow Resource Pack Bing Images YouTube Videos Bing Web Pages 5/2021 5:33:07 PM

Preview Deliver

ClassFlow Marketplace

Refine By:

Subject 

- Art and Design
- Citizenship
- Computing
- Design and Technology
- English

[+ Show All](#)

Grades 

- Pre-K
- K
- 1
- 2
- 3

Search for lessons, assessments and other interactive resources



 Lesson

Coronavirus

FREE



 Lesson

Let's Spread Kindness

FREE



 Lesson

Native Americans of the Pacific Northwest

FREE



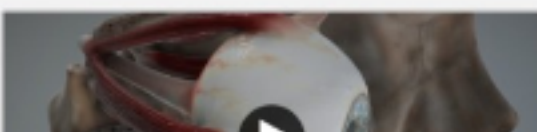
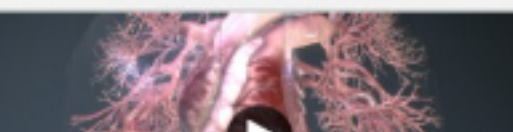
 Lesson

Coding & Robotics At McMeen

FREE



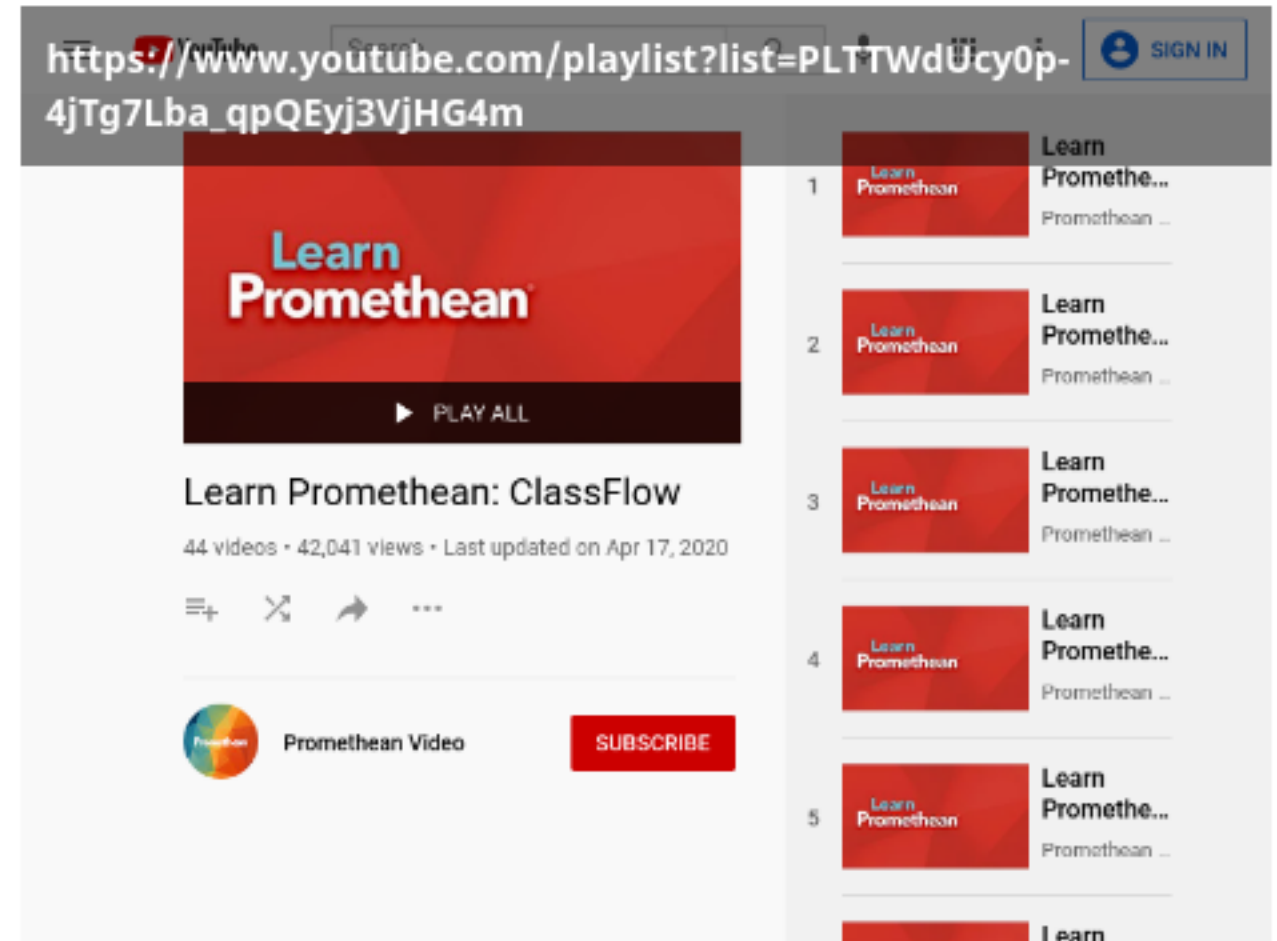
Walt Disney
6th Grade



Help & Support

To learn more about ClassFlow and other Prometheus solutions:

- Follow us on Twitter **@learnprometheus**
- Subscribe to our YouTube channel, Prometheus Video
- Visit our website **www.learn.prometheusworld.com/us**



Learn Prometheus

Thank you for attending today's session!

Be on the lookout for an email from me that will include follow-up resources!

You deserve a badge!

Scan the QR code or go to the following link:

bit.ly/Prometheanbadge

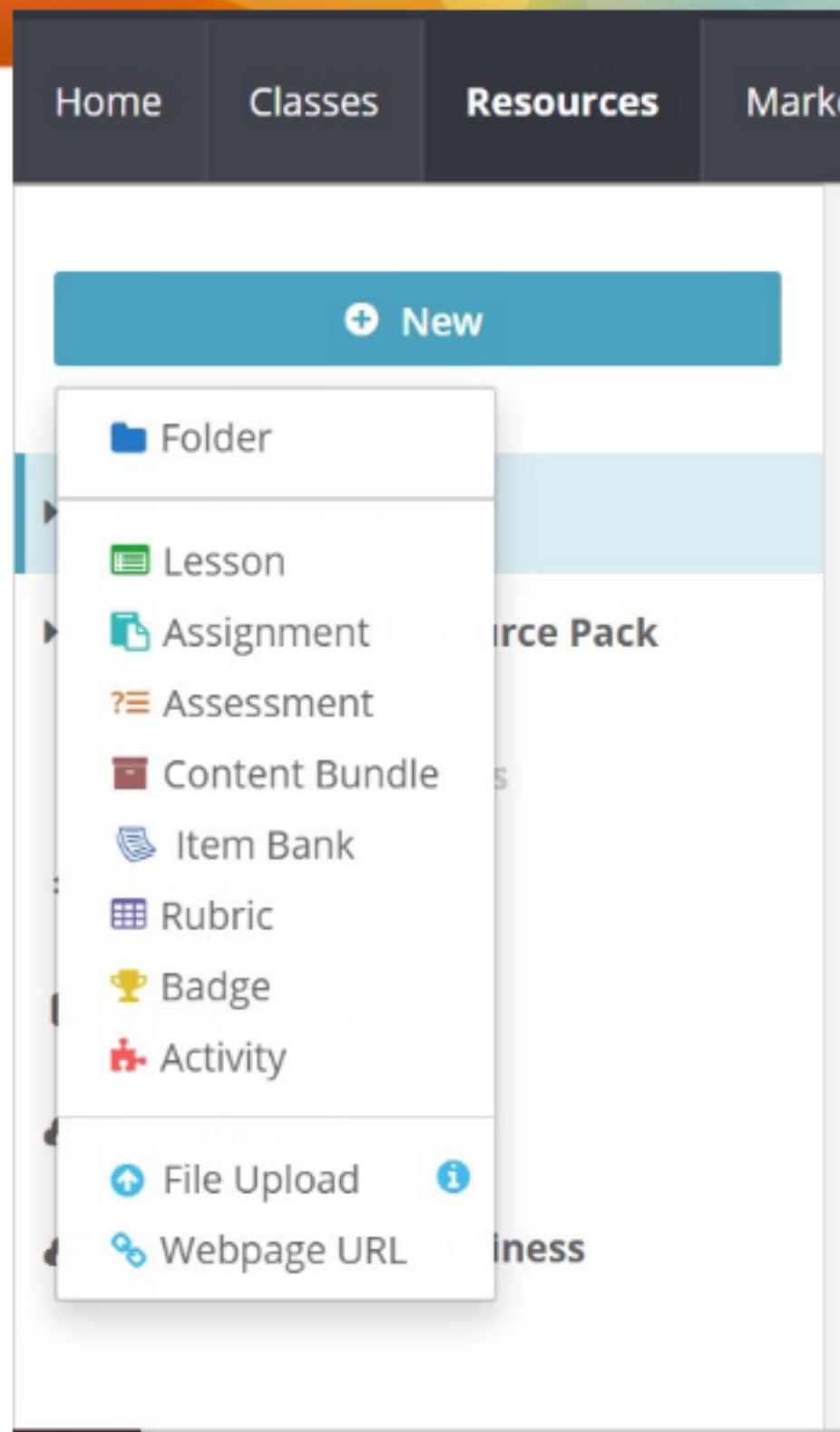
Promethean Badge



Any Questions?™

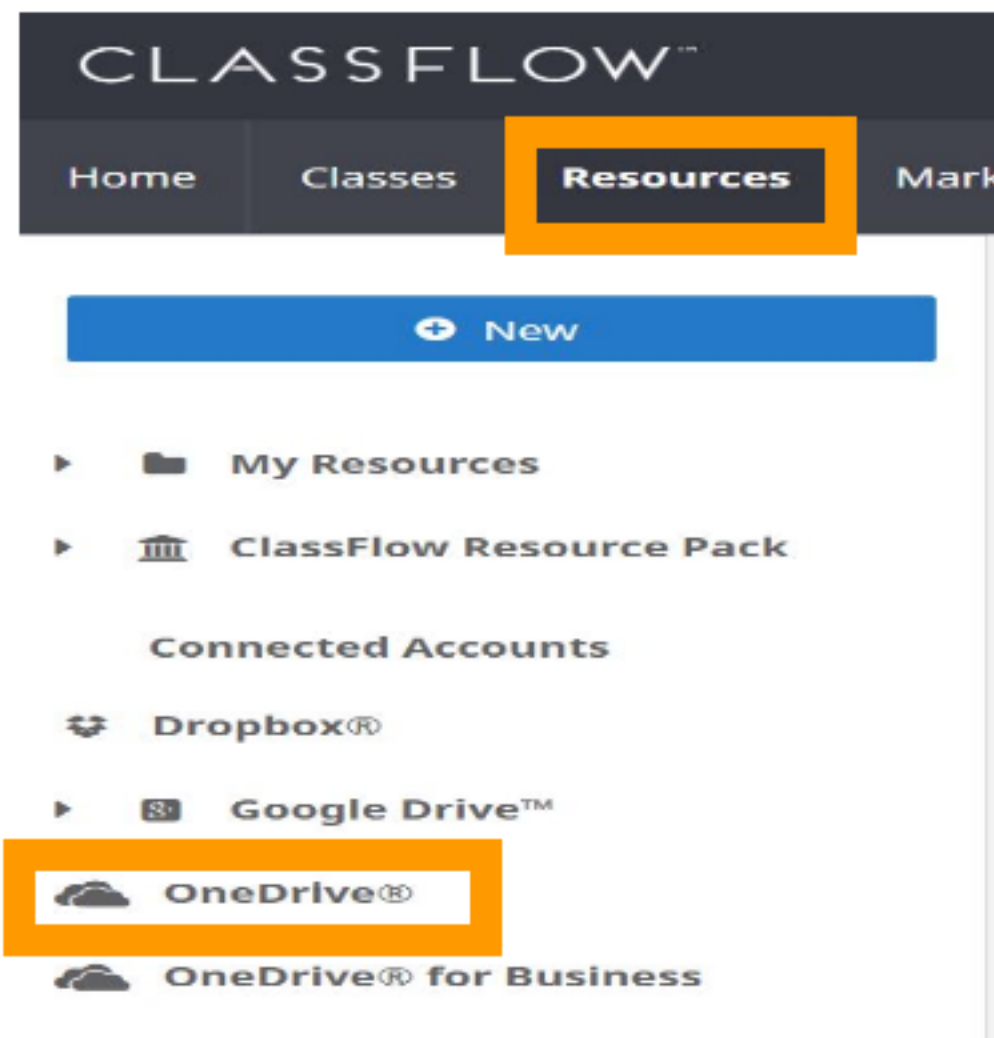


Uploading Resources



TASK TIME: Uploading Resources

- **TASK 1:** Upload a new resource
- **TASK 2:** Connect your OneDrive and "Copy" a resource to ClassFlow.



This will prompt you to upload a resource from your device.

- **Go to "Resources"**
- **Click "New"**
- **Click "File Upload"**
- **Feel free to make folders & stay organized**

